

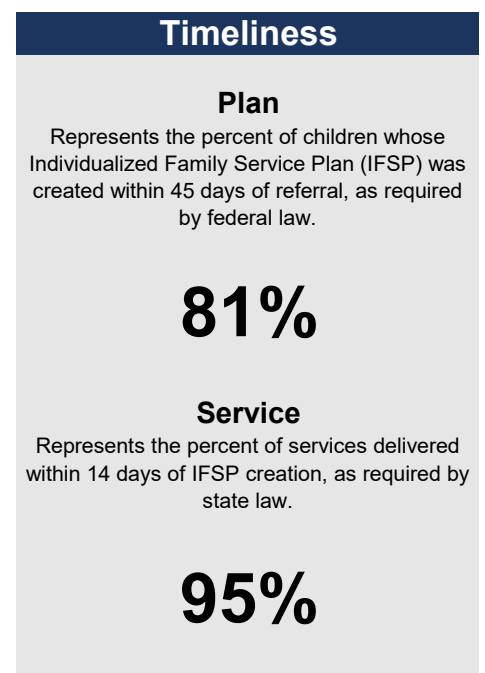
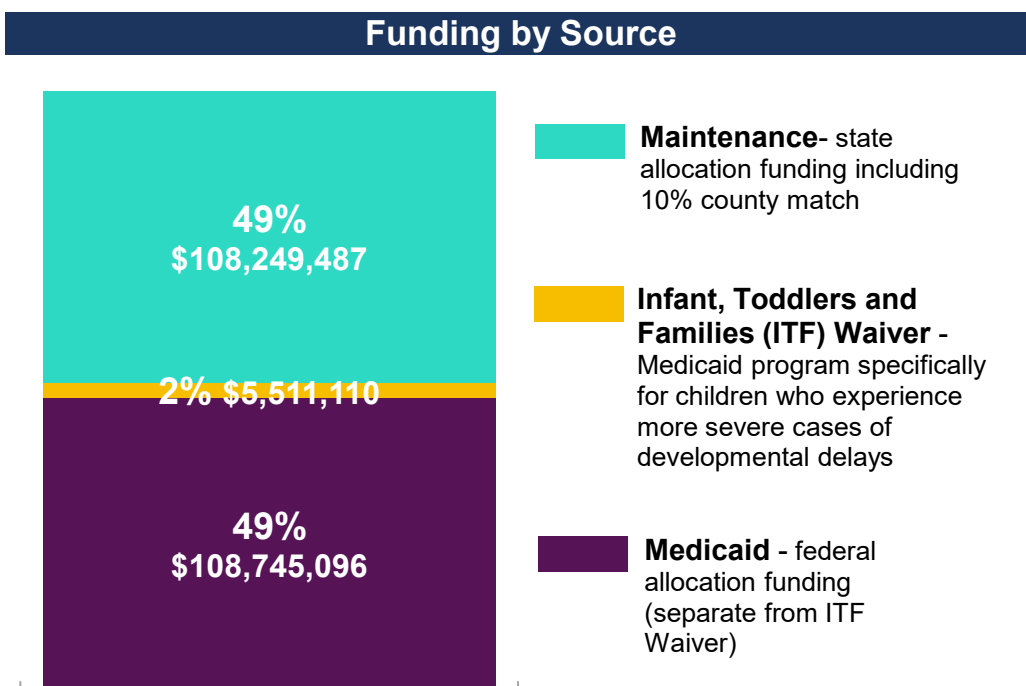
Infant and Toddler Early Intervention (EI), also referred to as Part C EI, is an entitlement program that provides services to children from birth to their third birthday who have a developmental delay or a high probability of having a developmental delay. In the first five years of a child's life their brain is growing at a faster rate than any other time in their life. Investing in these early years has a significant return on investment well into adolescence and adulthood.

Benefits from children receiving EI services:

- ✓ Reduced educational costs by minimizing the need for special education.
- ✓ Enhanced capacity of families to meet their child's needs.
- ✓ Improved child health and education outcomes.
- ✓ Enhanced development of infants and toddlers with disabilities.

Infant and Toddlers Served in FY 2024-25
<small>Total children participating in Part C EI throughout state fiscal year</small>
48,204
% of Children Under Age 3 Served
<small>Comparison of 12/1 enrollment to US Decennial Census data</small>
6.5%

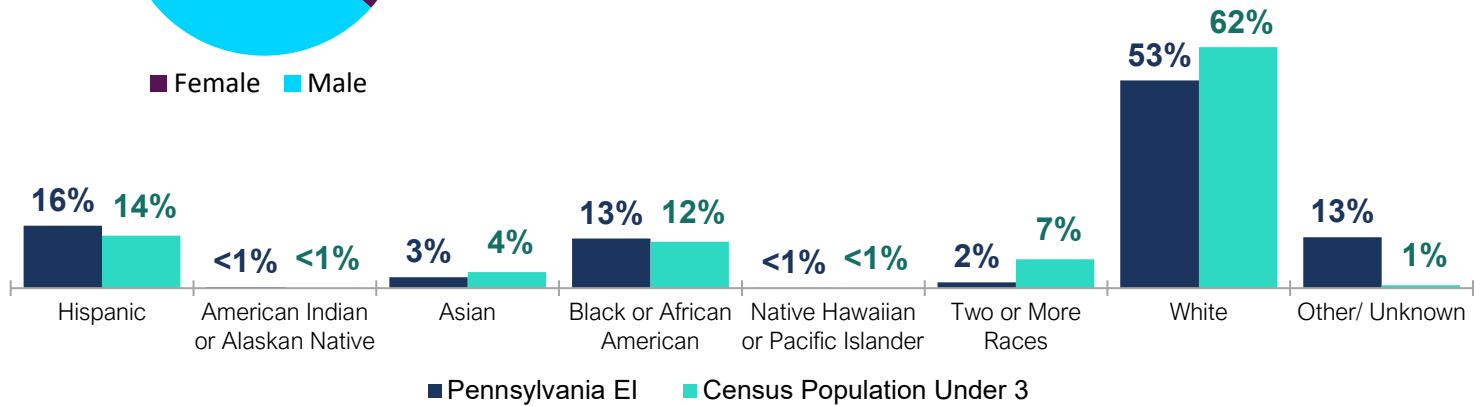
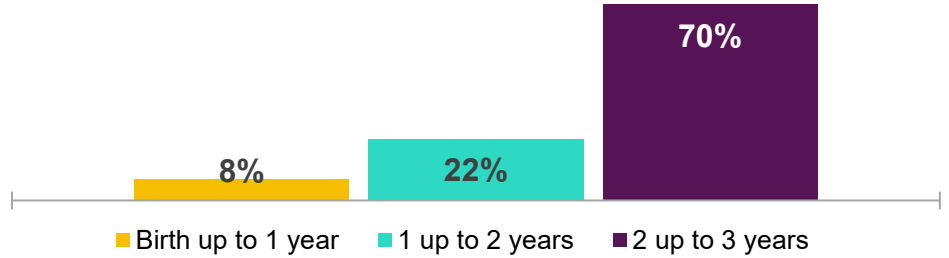
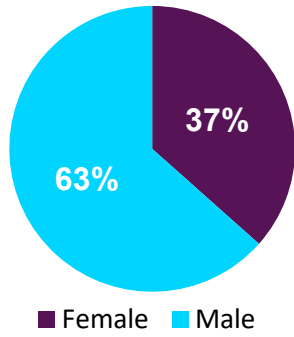
Most Common Services Provided	
Occupational Therapy	23%
Physical Therapy	20%
Social Work	2%
Special Instruction	28%
Speech Pathology	27%



Additional Infant and Toddler EI Facts

States are authorized by Part C of the Federal Individuals with Disabilities Education Act (IDEA) to administer the program, and in Pennsylvania, Infant and Toddler EI is overseen by the Department of Human Services with statewide general administration by the Office of Child Development and Early Learning. Each county or county joinder then administers the program individually.

Enrollment Demographics



Top Referral Sources

- Physician/Health Care Provider
- Parent/Family Member
- Hospital/NICU

Total Service Providers

4,650

Average Service Coordinator Caseload

42

How Can Policymakers Support Infant and Toddler EI?

We support an increase of **\$14 million** for the Infant/Toddler Early Intervention program, which is proportional to the 7 percent increase the program received in FY 2025–26.

A recent [Rate and Methodology Study](#) found that the program is underfunded by nearly 40 percent - a gap that today would require upwards of \$116 million to close. The proposed \$14 million increase is one necessary step toward our broader goal of identifying and serving additional children and advancing the implementation of the rate study’s recommendations to address the significant workforce shortage facing Early Intervention providers.

Thriving PA is an initiative of the Early Learning Pennsylvania coalition, which advocates for access to voluntary, high-quality early care and education and healthy development opportunities for every child in Pennsylvania. The EI Workgroup of Thriving PA is led by Pennsylvania Association for the Education of Young Children and Pennsylvania Partnerships for Children.

Data was provided by the Pennsylvania Department of Human Services' Office of Child Development and Early Learning to Pennsylvania Partnerships for Children.